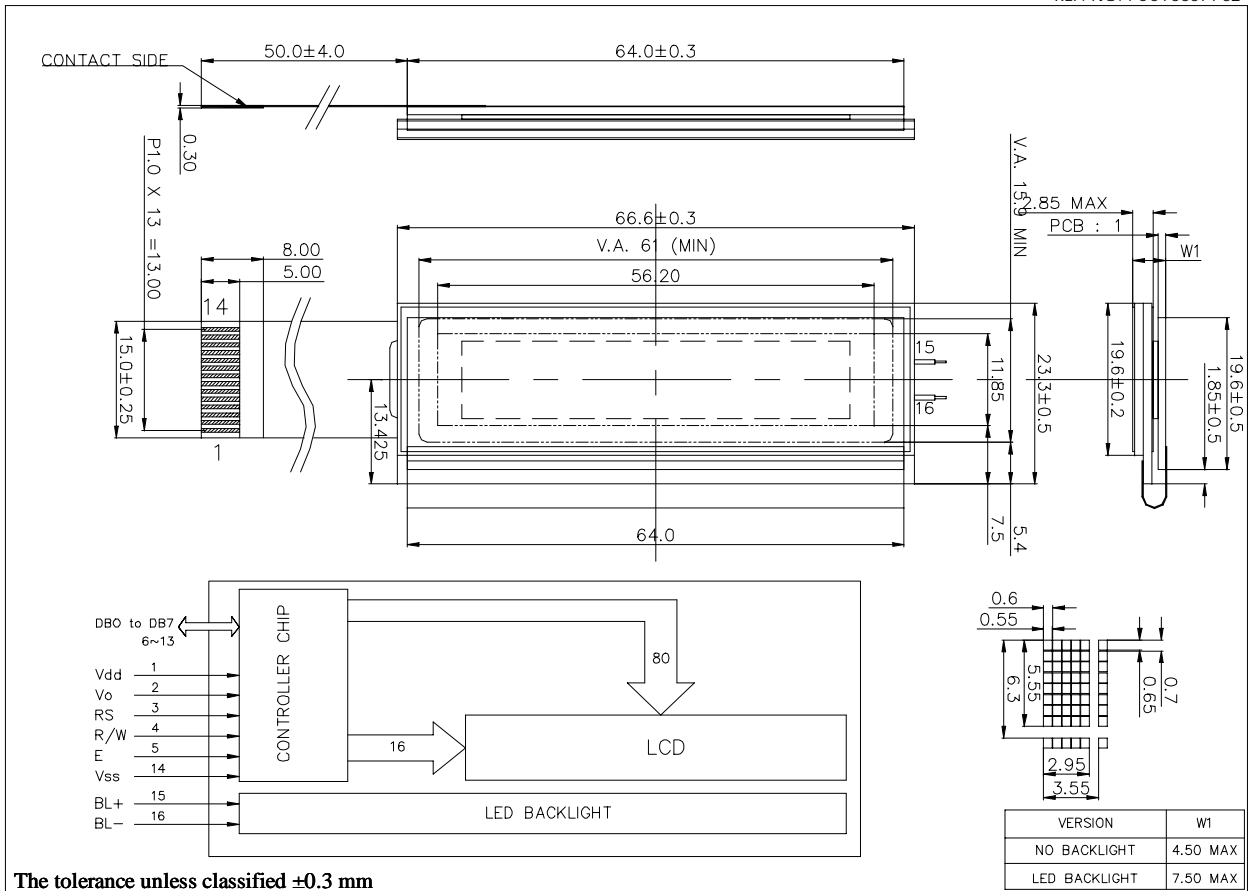


# STANDARD CHARACTER MODULES

## CMC216x06 . . . . . OUTLINE DIMENSION AND BLOCK DIAGRAM

REF. NO. : CCTC0071-02



### PIN ASSIGNMENT

Pin No.	Symbol	Function
1	Vdd	Supply Signal
2	Vo	Power Supply For LCD Driver
3	RS	Register Select Signal
4	R/W	Read / Write Selection
5	E	Enable Signal
6	DB0	Data Bus Line
7	DB1	Data Bus Line
8	DB2	Data Bus Line
9	DB3	Data Bus Line
10	DB4	Data Bus Line
11	DB5	Data Bus Line
12	DB6	Data Bus Line
13	DB7	Data Bus Line
14	Vss	Ground Terminal
15	BL+	Led Backlight Power Supply
16	BL-	Led Backlight Ground

### ABSOLUTE MAXIMUM RATING

Item	Symbol	Conditions	Min.	Max.	Unit
Power Supply Voltage	Vdd-Vss	-	-0.3	7.0	V
Input Voltage	Vin	-	Vss	Vdd	V
Operation Temperature	Topr	Nor	0	50	°C
Storage Temperature	Tstg	Nor	-20	70	°C

**ELECTRICAL CHARACTERISTIC (Vdd = + 5v, Ta = 25°C)**

Item	Symbol	Conditions	Min.	Typ.	Max.	Unit
Logic Supply Voltage	Vdd	-	2.75	-	5.5	V
"H" Input Voltage	V <sub>in</sub>	-	0.7Vdd	-	Vdd	V
"L" Input Voltage	V <sub>in</sub>	-	-0.3	-	0.4	V
"H" Output Voltage	V <sub>oh</sub>	-	2.0	-	-	V
"L" Output Voltage	V <sub>ol</sub>	-	-	-	0.4	V
Module Supply Current	I <sub>dd</sub>	-	-	1.0	2.0	mA
LCD Driving Voltage	V <sub>lcd</sub>	Vdd-Vo	-	4.5	-	V